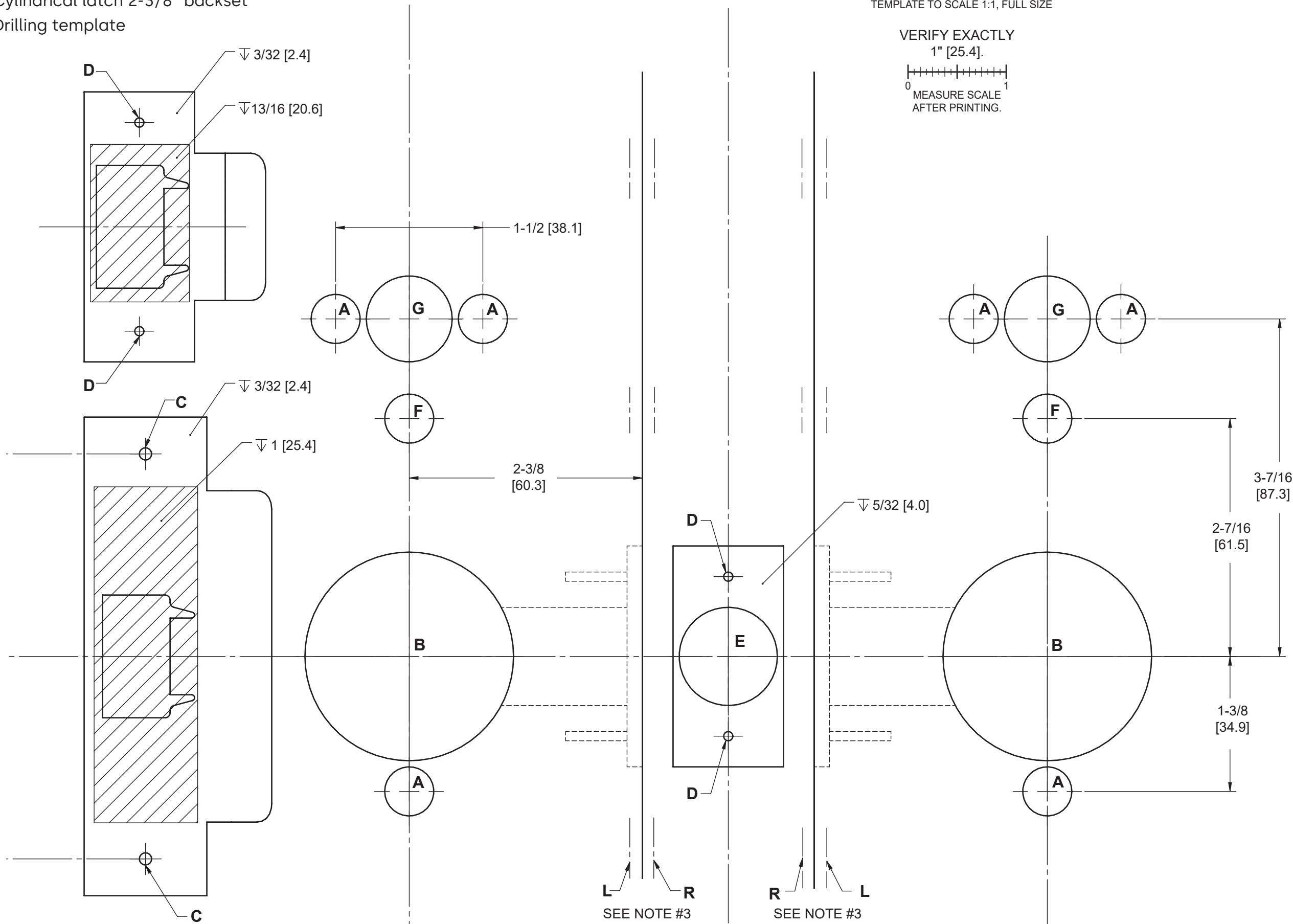


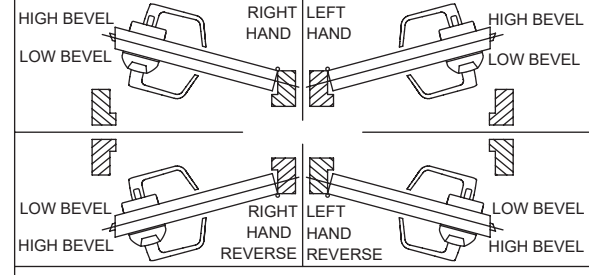
Saffire LX-L & Saffire EVO LZ-L

Cylindrical latch 2-3/8" backset
Drilling template

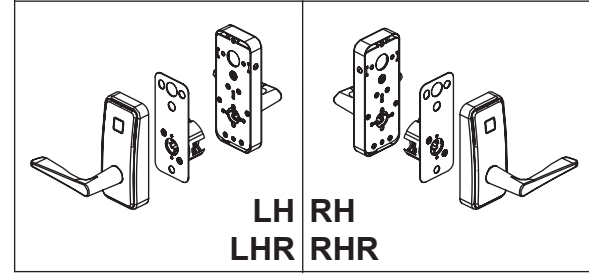


HOLE ID	DIM inch	DIM [mm]	COMMENTS
A	Ø 1/2	Ø 12.7	-
B	Ø 2-1/8	Ø 54.0	-
C	Ø 1/8	Ø 3.2	▽ 7/8 [22.2]
D	Ø 3/32	Ø 2.4	▽ 5/8 [22.2]
E	Ø 1	Ø 25.4	▽ TO Ø B
F	Ø 1/2	Ø 12.7	ONLY IF THUMB TURN
G	Ø 7/8	Ø 22.2	-

UNLESS OTHERWISE NOTED, DRILL HALF DOOR THICKNESS ON BOTH SIDES.



- NOTES:
- FOR DIMENSIONS AND TOLERANCES REFER TO CORRESPONDING DOOR PREPARATION DRAWING IP-516287
 - MORTISE TO BE INSTALLED BY ALIGNING IT WITH THE LOCK LEVER \odot
 - FOLDING LINES HIGH (H) AND LOW (L) FOR BEVEL EDGES SHOWN ARE FOR DOOR WITH 3° BEVEL ANGLE
 - SYMBOLS:
 - ▽ DEEP
 - \odot CENTERLINE OF DOOR
 - Ø DIAMETER
 - ALL DIMENSIONS ARE IN INCHES [mm]



WARNING

- To verify lock coverage and door operation meets expectations, dormakaba strongly recommends completing a full door mockup. This will ensure that all necessary products and parts for a successful installation are included.
- Always validate that you have selected the correct template for specific lock model being installed. The same lock model can be offered with different locking device options.
- Always validate after printing to confirm the dimensions listed on the drawing have printed on a 1:1 scale.
- If you have any questions, please contact your local sales representative or authorized reseller.